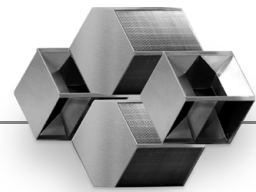


COMBI SOLUTION  
for larger air flows

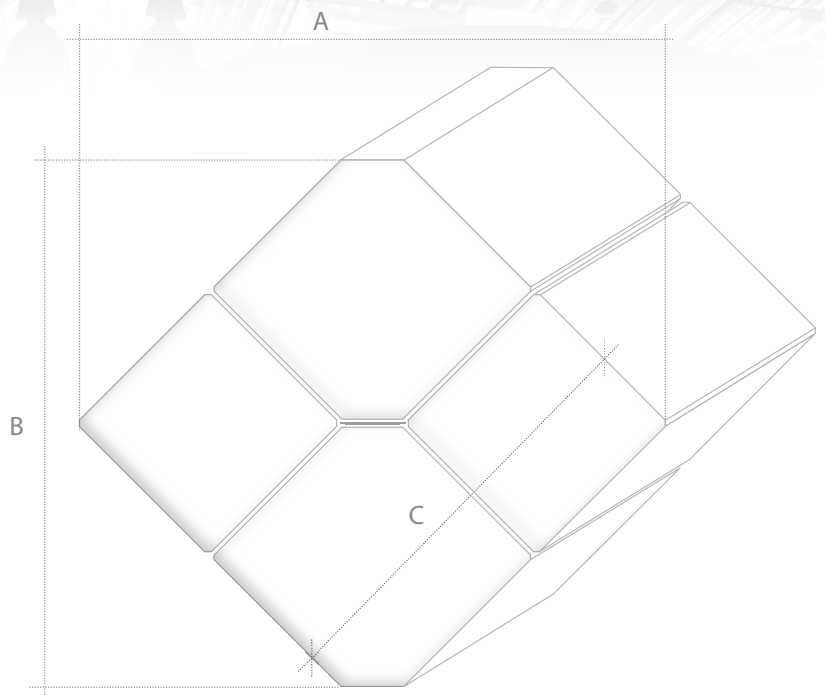


The **COMBI SOLUTION** is designed to cover a greater volume of air during heat recovery. It consists of 2 air-to-air counterflow heat exchangers (REK+ or REC+) and 2 air dividers. The individual components are supplied either separately, or mounted in one block, ready to be installed immediately into the recuperation unit. The CXS solution is suitable for 5,000 m<sup>3</sup>/h up to 25,000 m<sup>3</sup>/h. CXS recovers heat with maximum efficiency without mixing supply and exhaust air.

- Efficiency up to 90% guaranteed by patented technology
- Optimized pressure loss – using computer simulations
- Double folding technology for the REK+ and REC+ series = best tightness on the market
- Eurovent certification
- Easily recyclable packaging
- Calculation software and DLL library
- Passive House ready
- Ecodesign 2018 ready

## Dimensions

TYPE	Dimensions [mm]		
	A	B	C
CXS 39	1034	809	751
CXS 53	1313	1088	948
CXS 67	1594	1369	1146
CXS 81	1877	1652	1346
CXS 95	2167	1942	1549



## Key to coding

REK+ | REC+

REK+ | REC+  
39-200-24

39 ... 95

recuperator size

REK+ | REC+ 39-67-XX

200 ... 900 mm

REK+ | REC+ 81-95-XX

200 ... 500 mm

length of Combi Solution

22 ... 31

lamella spacing REK+

2.2 - 2.6 mm

lamella spacing REC+

2.5 - 3.1 mm

### REK+ | REC+

To correctly mark the product we use the code from the leaflet REK+ / REC+ and add to it the letters: CXS

REK + 95 - 500 - 31 - **CXS**  
Type size - length - spacing - Combi mark

*Illustrative example*

