



Your  
**ALTERNATIVE**  
in  
**PLASTIC**



**PLASTIC COUNTER-FLOW HEAT EXCHANGERS** REP+

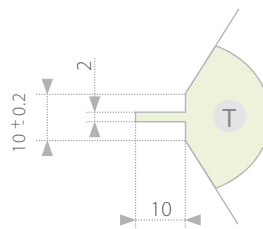
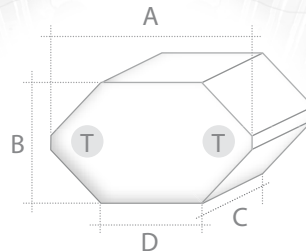


REP+ range brings the plastic alternative to the REK+ counter flow heat exchangers. The range offers good ratio between price level and quality. Combination of pressure drop and efficiency ensures the right parameters for SEC calculation of your residential unit.

- Efficiency up to 92 %
- Good ratio between price level and quality
- Parameters to ensure high SEC class level
- 100% tightness testing
- Easy recyclable packaging
- Easy handling
- Inbuilt bypass possible
- Calculation software and dll library

Dimensions

TYPE	Dimensions [mm]			
	A	B	C	D
REP+15 ...	496	150	100 ... 750	367
REP+17 ...	397	172	100 ... 750	246
REP+23 ...	455	230	100 ... 750	246
REP+27 ...	496	271	100 ... 750	246



Sealing profile at narrow sides for all sizes as an option.

Key to coding

REP+ XX - XXX - H - X - XX

**Size of heat exchanger** | 15; 17; 23; 27

**Length** |

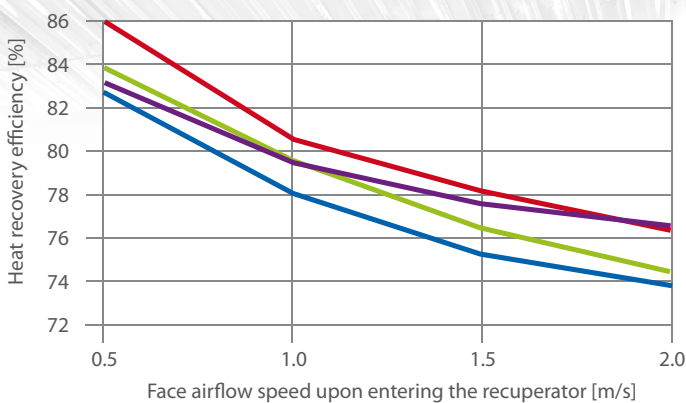
**Dimension C** | minimum length 100 mm  
maximum length 750 mm  
– growing by 1 millimetr (100; 101...)

**Lamella material** | H = HPS (High impact Polystyren)

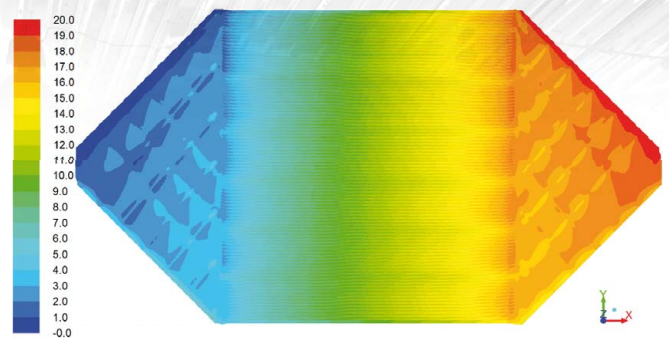
**Sealing profile** (T on the drawing) | T = T profile (with T ledge)  
F = flat (without T ledge)

**Lamella spacing** | 30 (3.0 mm) for size REP+17 and REP+23  
32 (3.2 mm) for size REP+15 and REP+27

Heat recovery efficiency



- REP+17 ... -30 > plate distance
- REP+23 ... -30 > Lamella spacing 3.0 mm
- REP+15 ... -32 > plate distance
- REP+27 ... -32 > Lamella spacing 3.2 mm



Computer optimized geometry

Tested according to EN 308.  
The manufacturer provides design software for precise calculation of any intake conditions.  
The inlet/exhaust air flow ratio is 1:1, the outside air temperature +5 °C, and relative humidity 72 %. Internal air temperature 25 °C, relative humidity 28 %.

